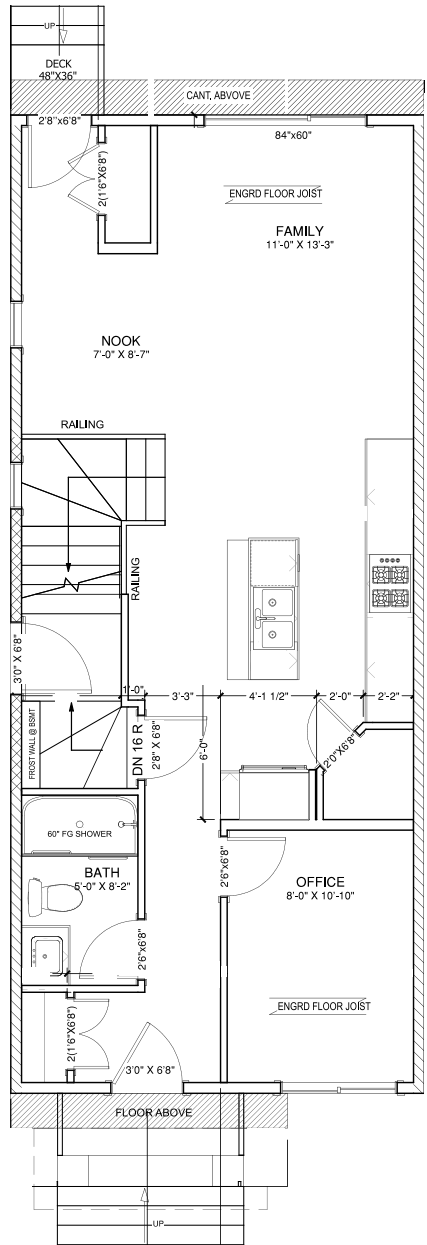


CEILING HEIGHT = 9'-1"

FOUNDATION PLAN

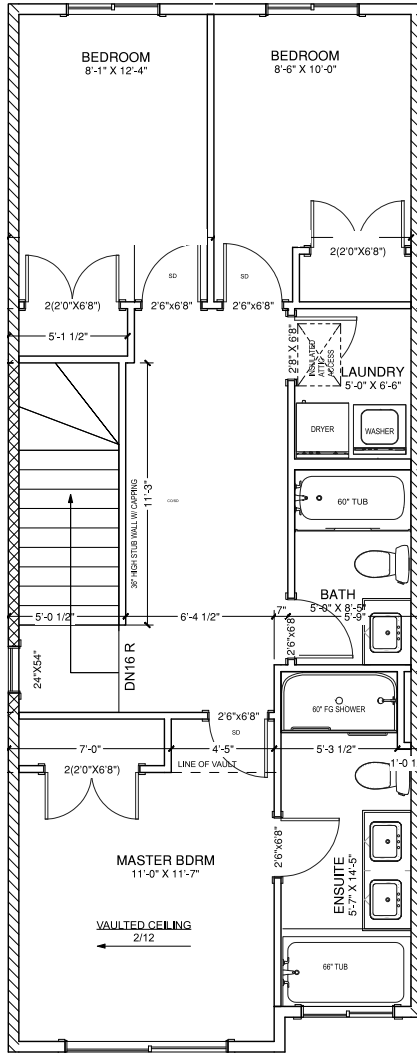


CEILING HEIGHT = 9'-1"

MAIN FLOOR PLAN

FLOOR AREA = 745 SQ.FT.

MAIN FLOOR	= 745 SQ.FT.
SECOND FLOOR	= 790 SQ.FT.
TOTAL SQ.FT.	= 1535 SQ.FT.



CEILING HEIGHT = 8'-1"

SECOND FLOOR PLAN

FLOOR AREA = 790 SQ.FT.