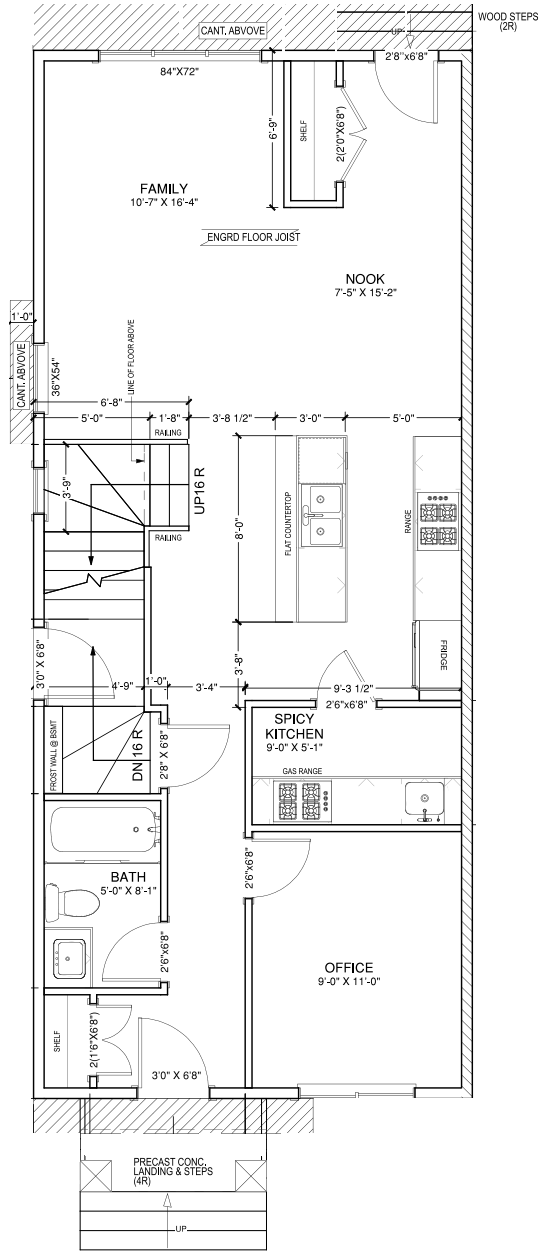


# FOUNDATION PLAN

CEILING HEIGHT = 9'1"

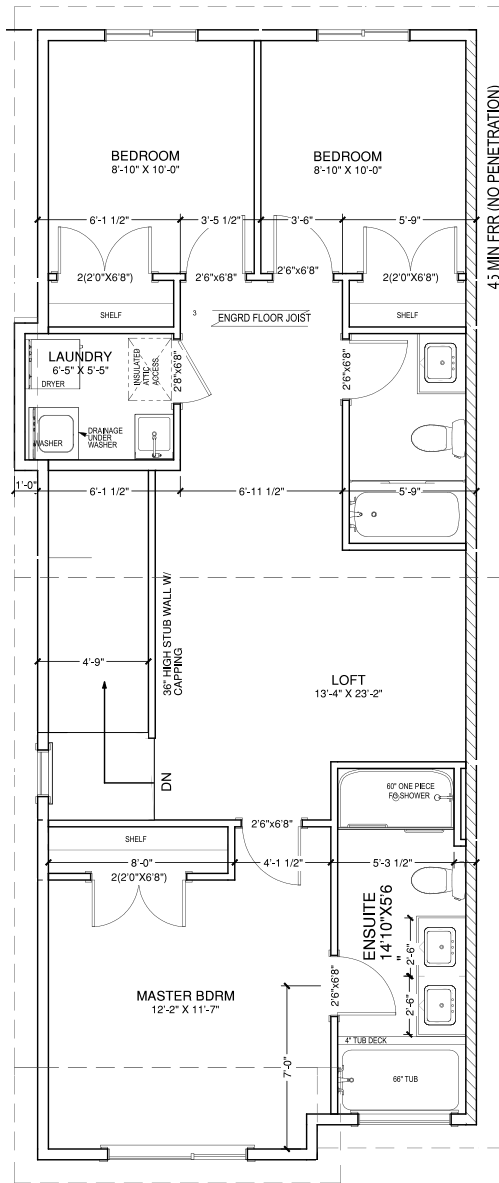


MAIN FLOOR = 848 SQ.FT.  
 SECOND FLOOR = 909 SQ.FT.  
 TOTAL SQ.FT. = 1757 SQ.FT.

## MAIN FLOOR PLAN

FLOOR AREA = 848 SQ.FT.

CEILING HEIGHT = 9'-1"



**SECOND FLOOR PLAN**  
 FLOOR AREA = 909 SQ.FT.

CEILING HEIGHT = 8'-1"